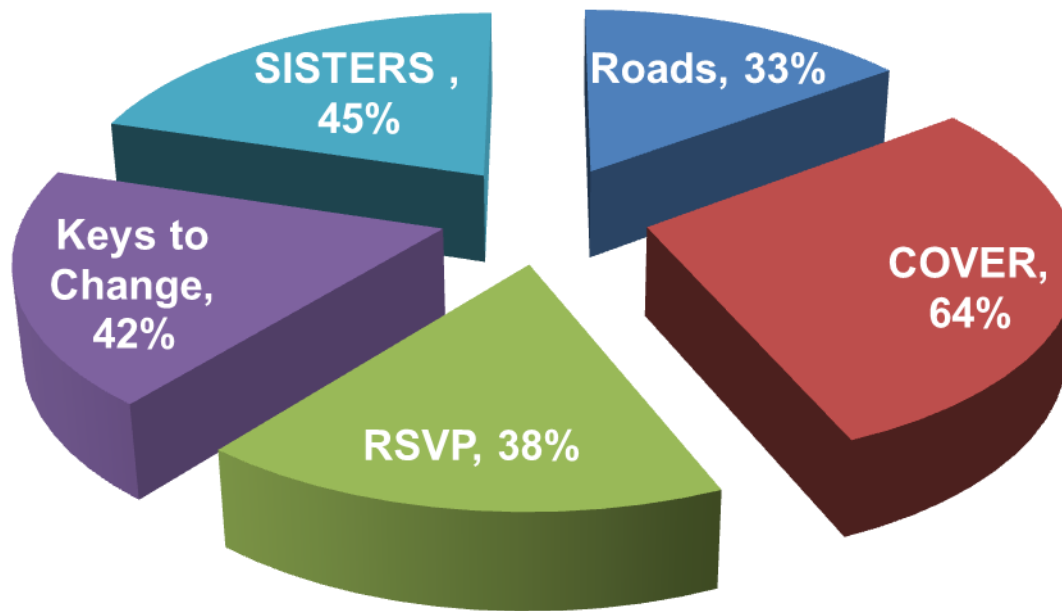




## RECIDIVISM RATES



Recidivism is defined as arraigned on a new offense or held on probation or parole, in SF County, within 12 months post release.

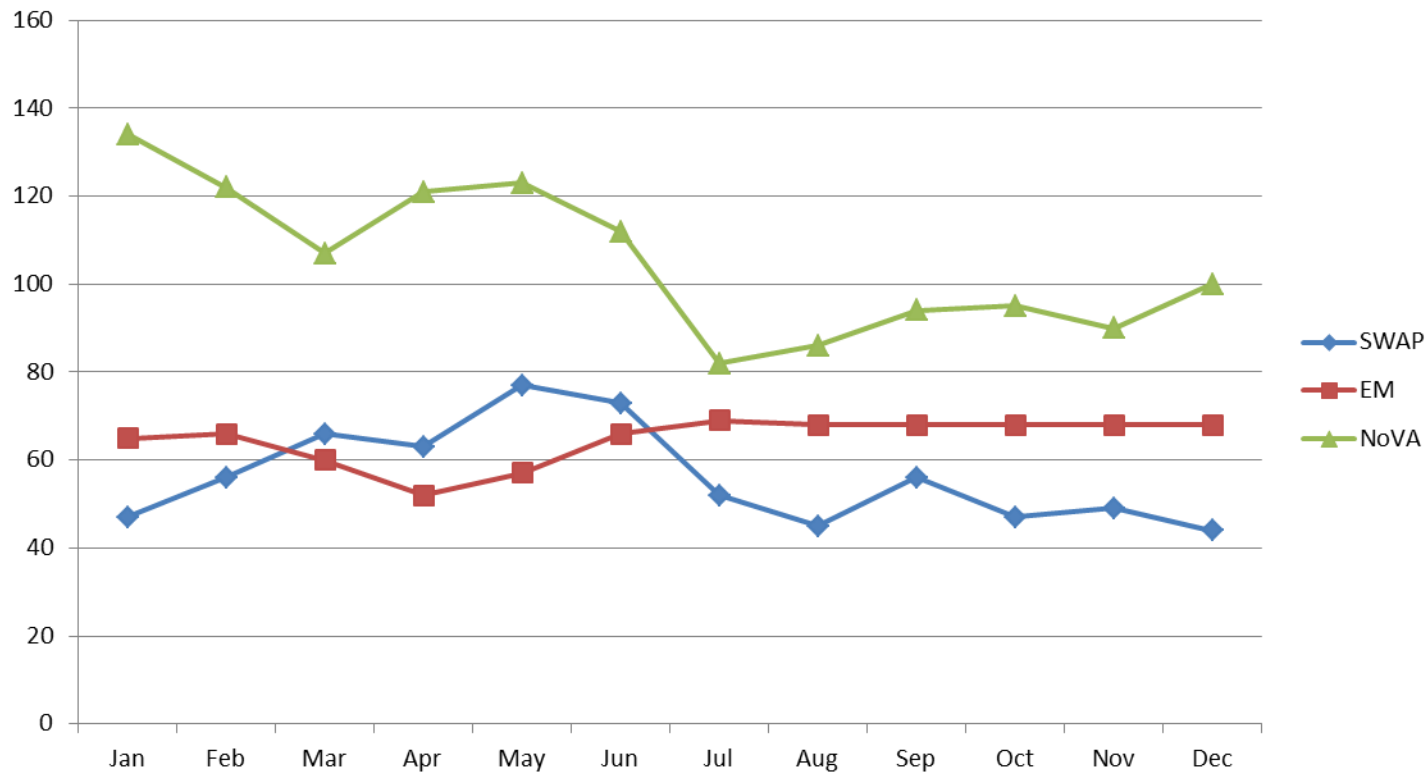


## **SFSD FIVE KEYS CHARTER HIGH SCHOOL**

The recidivism rate for FKCHS graduates from 2003 to 2010 was **44%**. The SFSD used a more encompassing definition of recidivism when collecting the data. The SFSD included anyone who experienced a re-arrest, including probation or parole violations.

A subsequent analysis was conducted for 75 randomly selected graduates from 2010 to 2013, this time evaluating only new convictions. Five Keys graduates in this study had a recidivism rate of just **28%**.

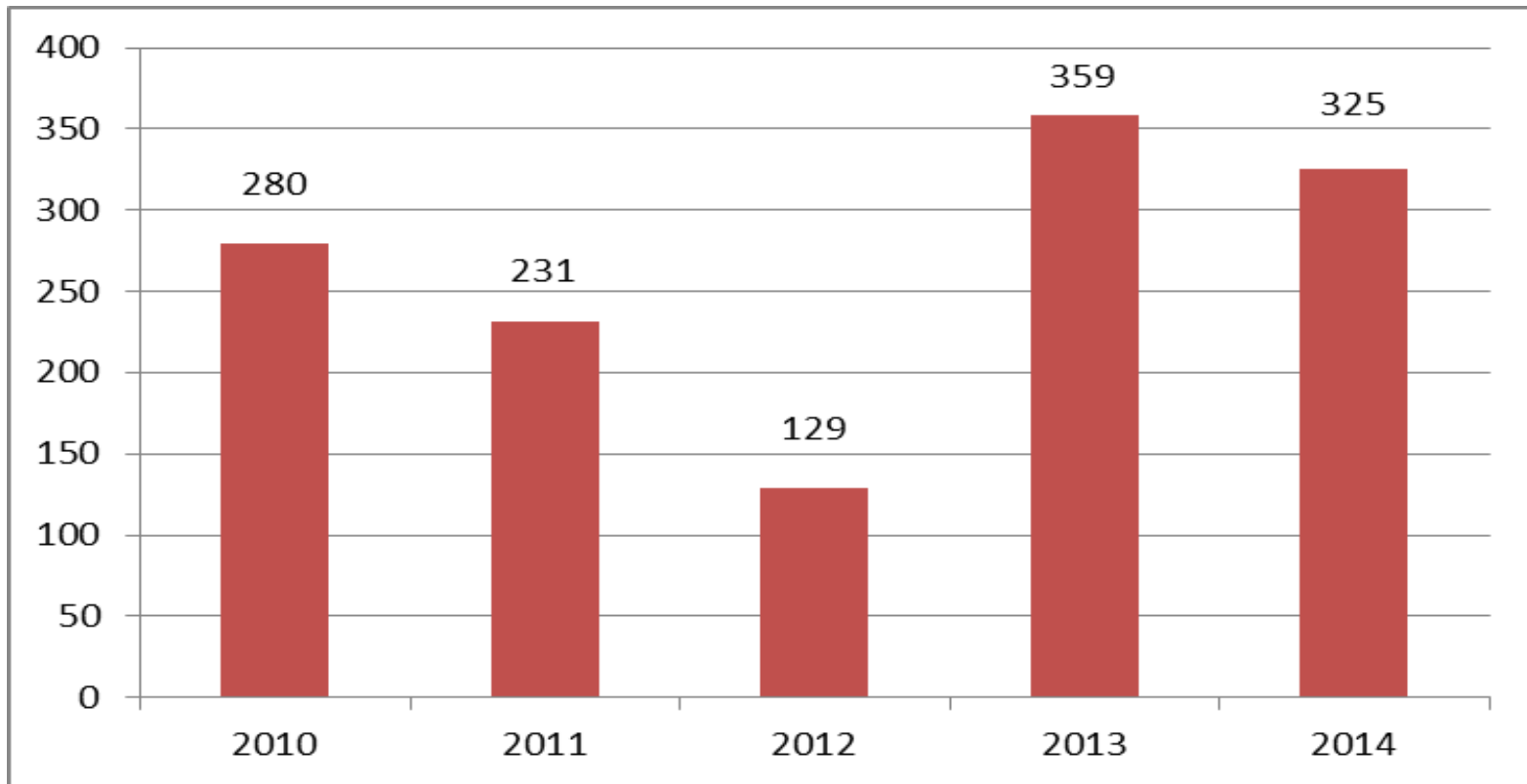
## 2014 COMMUNITY PROGRAMS & ALTERNATIVES



SWAP ADP 56   EM ADP 68   NoVA ADP 106



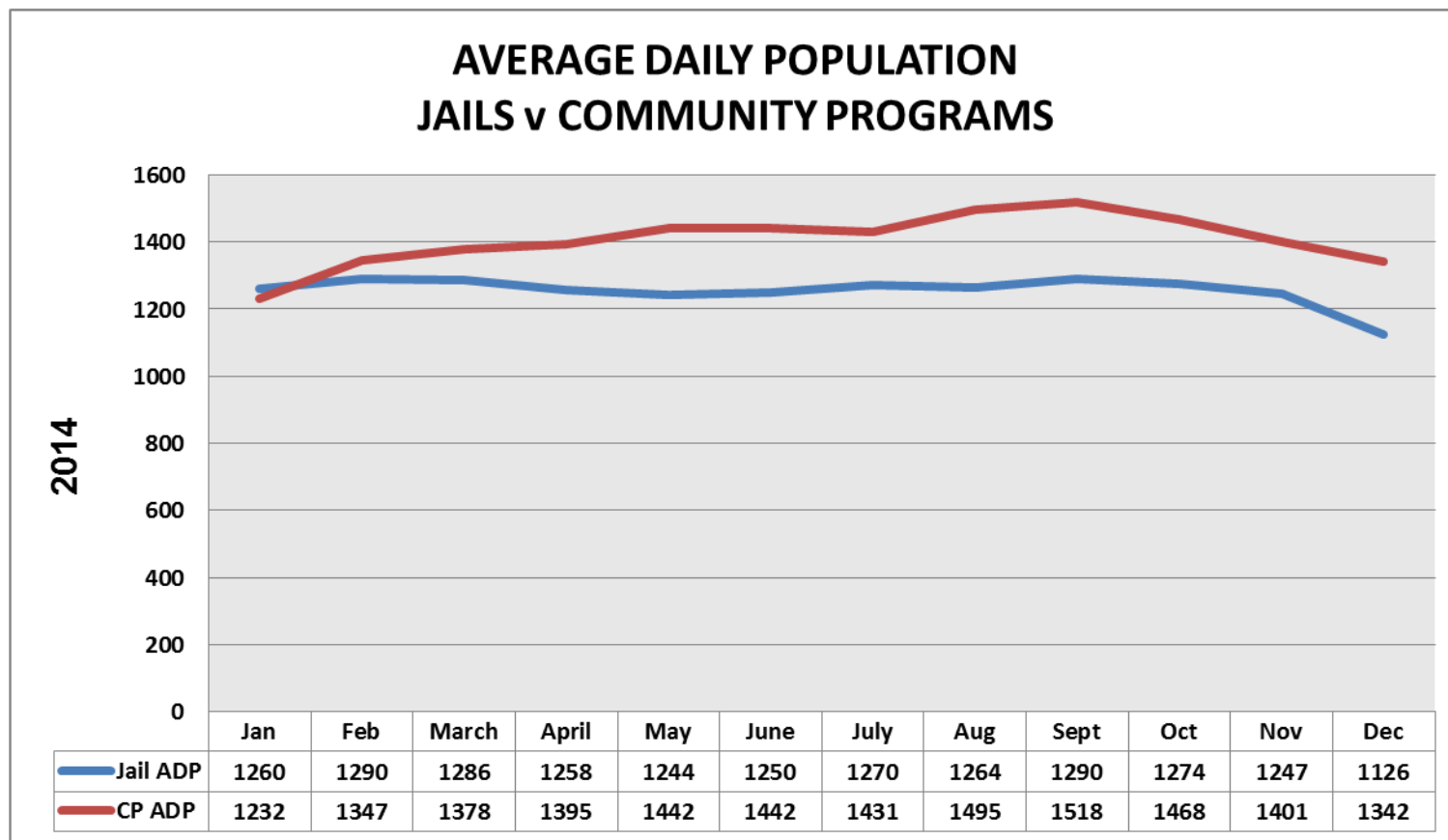
## ELECTRONIC MONITORING



2014 NOTES: 427 Evaluated; 325 Accepted; 68 ADP; 61 Failures



## AVERAGE JAIL POPULATION & AVERAGE COMMUNITY PROGRAMS POPULATION 2014



Note: CP data includes: EM, SWAP & Pretrial Release